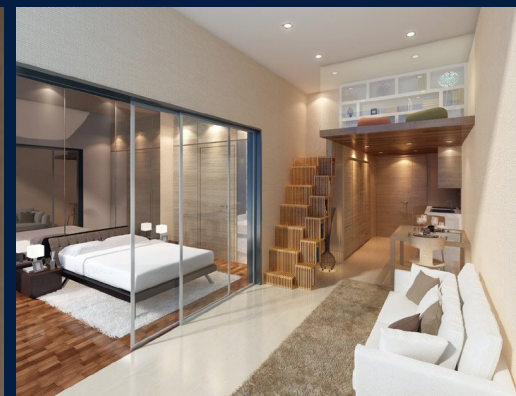


FOR SALE

RESIDENTIAL - CONDOMINIUM 3,154SQFT (293SQM) / CALL FOR PRICE!

+65 8644 5888



4 - Bedroom + Study Penthouse

TYPE PH5-4S

3,154 sqft



RESIDENTIAL - CONDOMINIUM

31, PHENG GECK AVENUE, MACPHERSON, POTONG PASIR, SINGAPORE 348226

- LISTING ID: SGLD11802908
- TENURE: LEASEHOLD 99
- TITLE: N/A
- SIZE BUILT-UP: 3,154SQFT (293SQM)
- SIZE LAND: 2.141AC (0.866HA)
- NO. OF FLOORS: 19
- FLOOR/LEVEL: N/A - PENTHOUSE
- BED ROOMS: 4
- BATH ROOMS: 4
- MAIDS ROOMS: N/A
- PARKING SPACES: N/A
- LAYOUT TYPE: CORNER
- FACING: N/A
- VIEWING: OTHER
- SELLING PRICE: **CALL FOR PRICE!**
- COMPLETION YEAR: 2017
- CONDITION: ORIGINAL CONDITION
- FURNISHING: PARTIALLY FURNISHED
- LISTING DATE: DEC 04, 2019

SENNETT RESIDENCE

Spacious 3,154sqft (293sqm), partially furnished, 4 bedroom, 4 bathroom Condominium for Sale. Completed in 2017, this penthouse corner unit is in original condition. Others: Leasehold 99 This property is currently vacant and ready to move in. Located in Singapore's district D13 near Macpherson, Potong Pasir in the area Central East (Central region).

INTERIOR FACILITIES

- Air-Conditioning
- Cable TV
- Balcony

OTHER INTERIOR FEATURES

- Cooker Hob/Hood
- Oven / Microwave
- Intercom
- Water Heater

EXTERIOR FACILITIES

- 24 Hours Security
- Covered Car Park
- Clubhouse
- Function Room

VISIT THIS PROPERTY AT: <https://www.carriechin.com.sg/property/SGLD11802908>

CARRIE CHIN - HUTTONS ASIA PTE LTD

3 Bishan Place #05-01 CPF Bishan Building
D20, 579838, Singapore

+65 8644 5888
WhatsApp Me

huttons.caridee@gmail.com

<https://www.carriechin.com.sg>



Scan QR Code

Huttons Call for Viewing
The Agency of Choice +65-86445888